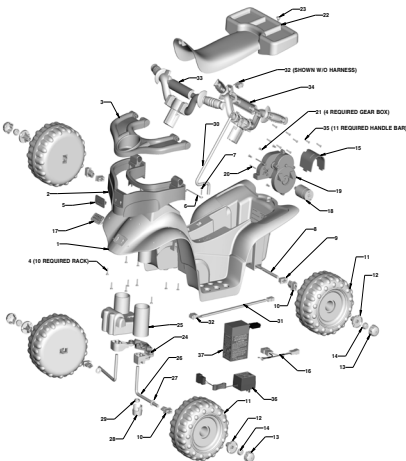


K0451 Lil Barbie Trail Rider (TRU) Toddler SERIES

| | |
|-------------------|--|
| Age Range: | 12-36 months |
| Weight Limit: | 40 lbs. Grass/Asphalt/Hard Surfaces |
| Surfaces: | |
| Speed: | 2 MPH Forward Pink Body/Purple Seat/Purple Wheels |
| Colors: | Seat/Purple Wheels |
| Intro: | 2006 |
| Suggested Retail: | \$79.99 26.250 x 13 x 6.375; |
| Box Dimensions: | 17 lbs |
| Warranty: | One Year Vehicle Six Months Battery |



| Item | Part Number | Description | QTY | Item | Part Number | Description | QTY |
|-----------|-------------------|---------------------------------|----------|------------------------|---------------------------|-------------------------|----------|
| 1 | N/A | CHASSIS DRILLED | 1 | 24 | K0451-9329 | STEERING LINKAGE ASSY | 1 |
| 2 | NA | RACK | 1 | 25 | K0451-2139 | BRUSH GUARD | 1 |
| 3 | K0451-2129 | LID, STORAGE RACK | 1 | 26 | 77760-4519 | FRONT AXLE | 2 |
| 4 | 0912-8001 | #8 X .750 PH PLAS SCREW | 10 | 27 | 0801-0253 | 5/16 TIGHT TOL WASHER | 2 |
| 5 | 00801-1503 | PW-EMBLEM | 1 | 28 | J8473-2359 | STEERING ROD CAP | 1 |
| 6 | 74230-4129 | BATTERY RETAINER | 1 | 29 | 00905-0116 | 3/18-16 NYLOK HEX NUT | 1 |
| 7 | 0801-0228 | #8-18 X 7/8 AB PHIL TRUSS SCREW | 1 | 30 | J8473-4539 | STEERING COLUMN | 1 |
| 8 | 77760-4529 | REAR AXLE | 1 | 31 | 3800-7785 | HANDLEBAR HARNESS | 1 |
| 9 | 74504-2549 | BUSHING, RECT NO EXT | 2 | 32 | 00801-0697 | SWITCH, SIGNALUX | 1 |
| 10 | 78560-2659 | BUSHING, RECT W/EXT | 4 | 33 | K0451-9209 | *HANDLEBAR, FRONT | 1 |
| 11 | K0451-2919 | WHEEL | 4 | 34 | K0451-9209 | *HANDLEBAR, REAR | 1 |
| 12 | 78780-2128 | WHEEL BUSHING | 4 | 35 | 0912-6002 | #6 X .750 PLASTITE | 11 |
| 13 | K0451-2349 | COVER, HUBCAP | 4 | 36 | 00801-0976 | CHARGER 4AH | 1 |
| 14 | 0801-0604 | .354 RETAINER PALNUT | 4 | 37 | 00801-1230 | 6V, 4AMP BLUE BATTERY | 1 |
| 15 | K0451-2159 | MOTOR COVER | 1 | PARTS NOT SHOWN | | | |
| 16 | 77760-9699 | MAIN HARNESS | 1 | Part Number | Description | QTY | |
| 17 | 00801-1503 | LOGO, PW-EMBLEM | 1 | 00801-1567 | Wrench | 1 | |
| 18 | 00968-3700 | MOTOR, PINION | 1 | 0801-0198 | Lock Out Screw | 1 | |
| 19 | 00968-3800 | #10 GB BLK | 1 | 00968-3900 | Motor Gearbox Assy | 1 | |
| 20 | 00801-0198 | M3-.5 X 32 MM NYLOK SCREW | 2 | K0451-0920 | MANUAL | 1 | |
| 21 | 0801-0202 | #8 x .500 PH PLAS SCREW | 4 | K0451-0310 | DECAL SHEET | 1 | |
| 22 | 3800-8128 | SEAT LABELED | 1 | | | | |
| 23 | 78570-2439 | LOCK FASTENER | 1 | | | | |

Bold and Underlined parts are to be purchased and installed by Service Centers only. These may not be sold directly to consumers by Service Centers or Fisher-Price. #33 & #34 are shown on the diagram. Both consist of the handlebar assy.

1/30/2008 15:38